



# INFORMATION BOOK

## for

## 2025







Neerim South Primary School No. 2432  
180 Main Road, Neerim South 3831  
Telephone: 03 5628 1254  
Principal: Rebecca Williams  
E-mail: [neerim.south.ps@education.vic.gov.au](mailto:neerim.south.ps@education.vic.gov.au)  
[www.neerimsouthps.vic.edu.au](http://www.neerimsouthps.vic.edu.au)

## INTRODUCTION

Dear Parents,

I would like to take this opportunity to extend a warm welcome to you and your child to Neerim South Primary School. I sincerely hope that your association with the school will be both happy and beneficial for you and your child.

At Neerim South Primary School our vision is to provide a safe, inclusive and engaging learning environment that enables all students to achieve their full potential. Our mission is to offer an education that strives for academic excellence and provides an inclusive, balanced learning program that is rich in experiences. At our school we provide opportunities for each student to become a confident and responsible global citizen, meeting challenges and embracing opportunities within our changing world. Our values are integrated into every facet of our school.

Respect – treating everyone and everything with consideration and courtesy. It means caring about myself, others and the environment.

Learning – gaining knowledge, skills and understanding through endeavour and experience. It means knowing and understanding more.

Teamwork – working together towards a common goal and being able to work and act positively with others. It means working together to get the job done.

Perseverance – believing in yourself and doing your best until you achieve your goals. It means having a go and “sticking to it” until it’s finished.

*School exists for students and it is their interests and well being that we consider at all times.*

*We value strong communication between home and school. You can find out about our school through our fortnightly newsletter, our website, or follow us on our school Facebook page.*

*I believe we have the greatest resource of any school, in a dedicated group of teachers who have the best interests of students at heart. Their commitment and care for our students makes Neerim South Primary School a strong learning environment for students.*

*Please feel free to contact us at anytime if you have any further questions.*

*Yours sincerely,*

Rebecca Williams

**PRINCIPAL**

## **AMBULANCE**

It is recommended that parents consider joining an ambulance scheme as, if an ambulance is called by the school, then the cost is borne by the parents. Parents and guardians are generally responsible for paying the cost of medical treatment for injured students, including any transport costs. Most medical costs will be refundable by Medicare. If you are a member of an ambulance or health insurance fund, you may also be able to claim transport or other expenses from the fund. Low cost 24/7 insurance policies are available from most insurance companies.

## **ANNUAL REPORT**

Each year the school produces an annual report of its performance. It is presented by the Principal to School Council at the annual reporting meeting in March/April. A copy of this report is also published on our website and the governments My School portal or a hard copy can be obtained from the school office.

## **APPOINTMENTS**

We value close links between home and school. If you feel that a problem exists at any time concerning your child's behaviour or performance at school, please come in or telephone the teacher/Principal to discuss it. Either before 8:50am or after 3:20pm is the best time for seeing teachers and a discussion time can be arranged. Parent/teacher discussions and student led conferences are generally conducted in terms 1 and term 3. We urge you to attend these if you can. It is generally accepted that when parents express confidence in the school and are involved in it in some way, their students are likely to be happier and perform better in the classroom.

## **ASSEMBLY**

Each fortnight on Friday afternoon an assembly is held for all the school at 2.45pm. Parents are most welcome to attend.

## **AUSLAN**

Neerim South Primary School has chosen to teach Auslan as our compulsory LOTE subject. Auslan is a visual-spatial, natural language with its own grammar and vocabulary, and conveys a message through a combination of sign, fingerspelling, physical posture or facial expression. We believe learning Auslan is a great way to enhance educational and personal development, increase memory retention and motion processing, stimulate brain development and mental flexibility and increase enjoyment in communicating.

## **ASTHMATICS**

The school is required to keep an Asthma Management Plan, approved by the child's doctor, on record at school. If your child suffers from Asthma, please make sure you provide this plan to the school. A student's medication should be with them at all times, but parents are also asked to supply the school with spare medication with their child's name on it for use in emergencies. Asthma Action Plans should be updated yearly and it is the parent's responsibility to provide this to the school.

## **ATTENDANCE**

It is essential that if a student is late or absent to let us know. You can do this by ringing the school, on 5628 1254 via the Compass parent portal or email the school to let us know. [neerim.south.ps@education.vic.gov.au](mailto:neerim.south.ps@education.vic.gov.au)

If we haven't heard from you by 10am on the day of the absence, then we are mandated to contact you that day to see why your child is absent. You may receive a SMS message.

## **BELONGINGS**

It is important that **all** articles of clothing, lunch containers, drink bottles and footwear are clearly labelled. This especially applies to jumpers, hats and coats. We do try and return lost property to the classrooms, however it is made difficult if the item is not labelled or the name is unreadable or wrongly labelled with previous owner's name.

## **BICYCLES**

Bicycles are permitted at school but we do not encourage students below grade four to ride their bike to school. School policy states that students **MUST** wear a safety helmet if they are riding to school. Riders should observe regular traffic rules. Bicycles are not permitted to be ridden in the school grounds or in front of the school.



## **BIKE EDUCATION**

A Bike Education program is provided to students in years five and six annually, depending on funding from Sporting Schools. This program ensures students are educated regarding bike and road safety.

## **BOOK CLUB**

Book Club order forms are sent out twice a term by parent volunteers. Parents may order if they wish and books are usually delivered within three weeks.

## **BOOK LISTS**

Notices regarding stationery requirements for the following year are sent out towards the end of term four.

## **BUILDING FUND**

NSPS has an officially registered Australian Taxation Office (ATO) Building Fund for the maintenance and repair of the Cowan Hamono building or other building projects. This is a tax deductible contribution to the school and a tax invoice will be provided upon request. All donations are gratefully accepted. You do not have to be a school family to donate.

## **BULLYING AND TEASING**

Every person at this school has the right to work in an environment where they feel safe. The school has an Bullying Prevention Policy which has an agreed set of procedures to be followed if a complaint is made in this area.

## BUS TRANSPORT

There are three buses used by our students. The buses are coordinated by the secondary college. Application forms for travel are available at the office. Students line up in their bus lines and are checked off a roll before boarding the bus after the finish of school. The school must be informed if a child is not going to travel by bus on a particular night. This minimises time wasted waiting for students and ensures all students who travel by bus are accounted for. Duty teachers supervise this procedure. All bus travellers sign a bus travel expectation contract when they first commence travelling on a bus. Inappropriate behaviour may lead to suspension from travelling on the bus, as we want to ensure safe travel for all students.

- Only students who live further than 4.8km from the school are eligible for free bus transport and only students who are travelling to their nearest school.



## CAMPS AND EXCURSIONS

Excursions are planned as an important educational experience that complement our learning program. Local excursions where students walk are arranged within the school, and do not require permission slips to be completed. When we use transport, permission forms are sent home. Camps are planned well in advance and require permission forms to be signed that include medical details and indemnity.



All grades have excursions relevant to the curriculum. Grade three, four, five and six attend bi annual camps. In the odd years grade three and four attend a three day camp and in the even years grade five and six have their camp.

## CAMPS - PAYMENTS

If you are a holder of a Health Care Card, Veterans Affairs Gold Card, Pensioner Concession Card or are a temporary foster parent, you can apply for the Camps Sports and Excursion funding. For primary school students the rate is currently \$150.00 per year and can only be used towards the cost of camps, sports and / or excursions costs for your child.

## CHILD SAFETY

We are a Child Safe School and are governed by Department Policies <http://neerimsouthps.vic.edu.au/parents>

## COMMUNICATIONS

A newsletter is emailed fortnightly to families on a Thursday. Parents are most welcome to arrange discussions with teachers throughout the year. Parent/teacher discussions and student led conferences are held in term 1 and 3 each year. Written reports on each child are sent out at the end of term 2 and term 4. We welcome your input and suggestions and attempt to keep you informed. Information evenings will be arranged early in the year to explain programs that operate in the school. Other forms of communication include our Facebook page, Compass (either via the app or desktop computer).



**Please inform us of any change in family circumstance eg: change in address or telephone numbers, email address, emergency contacts, etc.**



## COMMUNITY USE OF SCHOOL GROUNDS

The School Council encourages the use of our grounds on an informal basis when school is not in session. After school, students should report home and return to use our grounds if they wish. Four special requests are made:

1. Do not play with or near outside school care children.
2. Keep off the roof.
3. Play away from the buildings.
4. Don't climb trees.

Permission for the public to use the school buildings is at the discretion of School Council and is generally encouraged.

## COMPASS (either via the app or desktop computer).

Compass is a program that we use to communicate with families. A password will be provided to each family upon enrolment. You can use Compass to inform the School of student absences, access to student reports, connect with the classroom teacher and to receive general notifications. If you have the app you will get a notification via the app, or an email.



## COMPUTERS / IPADS

We have four trolleys of up to 28 Netbook/Chromebooks (laptop computers) for use in the 3-6 classrooms. The school also has class sets of iPads in the F-2 classrooms. The school has LED Tv's in all classrooms. Educational programs include the use of e-mail, the Internet, MS Word, Paint, Powerpoint and Publisher.



## CONTACT INFORMATION

Postal address: 180 Main Road, Neerim South 3831  
Telephone: 5628 1254  
After School Care Mobile: 0408 812 072  
Website: [neerimsouthps.vic.edu.au](http://neerimsouthps.vic.edu.au)  
Email: [neerim.south.ps@education.vic.gov.au](mailto:neerim.south.ps@education.vic.gov.au)  
Facebook: [facebook.com/neerimsouthps](https://facebook.com/neerimsouthps)



## CONCERNS and COMPLAINTS

Neerim South Primary School welcomes feedback, both positive and negative, and is committed to continuous improvement. We value open communication with our families and are committed to understanding complaints and addressing them appropriately. Please refer to the Complaints Policy for further detail.

## CONVEYANCE ALLOWANCE

Parents who are more than 4.8km from the school and cannot access a school bus route are eligible for a conveyance allowance which is means tested. Forms are available from the school office.

## DAMAGE TO PROPERTY

If school property is damaged, other than accidentally, the student or group of students will be expected to pay for the damage.

## **DIGITAL SIGN**

The digital sign at the front of the school is viewable from 6am to 11pm each day to keep up to date with programs, events and information regarding the school.

## **EMERGENCY CONTACTS**

These are people that the school may need to contact in an emergency. Please ensure that the people named are aware that they have been nominated as emergency contacts and agree to their details being provided to the school.

## **END OF TERM**

On the last school day of term school will finish at 2.30pm. Buses also run at this time. On the last day of Term 4 school will finish at 1:30pm.

## **ENROLMENT**

Students who reach the age of five years on or before 30 April are eligible to commence school in the preceding February. An enrolment form can be obtained from the office or the website. To enrol your child, a birth certificate or extract must be provided as proof of birth date and name, and an immunisation statement is also necessary.

## **EVENTS PROGRAM**

We run an events program as an integral part of our curriculum. The program is set yearly and may include visiting presentations (incursions), sports days, theme days, excursions, school concert, dances, Life Education visit and other special events which involve money from families to cover costs. Charges may apply to events as it arises.

## **FACEBOOK**

NSPS Facebook page is used primarily to let our school community know what is happening in our school and share with you some of the wonderful work our students are creating. We ask that you refrain from commenting on this page. [facebook.com/neerimsouthps](https://www.facebook.com/neerimsouthps)



## **FINANCE AND FUNDRAISING**

DET finances wages, buildings, support services, and many of our school requirements through quarterly grants and education allowances for requisites. Unfortunately, this does not pay for the total year's education, so the school community is asked to assist in paying for their child's education by way of school charges and voluntary assistance and support of our varied functions. Our Parents and Friends association raises funds each year through their efforts and School Council sets parent contribution rates so that the total school community shares in the provision of adequate resources to all students. The richness of your child's experiences at school depends to a large degree on the variety of equipment, aids and resources available to the teacher and the class.

## **FIRST AID**

Students who are ill should not be sent to school. Minor accidents can be treated at school, but for more serious accidents, medical aid will be sought. Every effort is always made to contact parents in such cases. Please ensure that the emergency contact information held at school is kept up to date.





## FLY INTO FOUNDATION PROGRAM

This is an exciting transition program only for students enrolling in Foundation Grade at NSPS. It is a weekly session run by our Foundation teacher each Friday from 2pm - 3.00pm throughout semester 2 (Terms 3 & 4).



This fun program allows our enrolling students and their families to experience day to day school activities, building confidence for the start of their official schooling the following year.

## GLASS BOTTLES

Glass bottles are **NOT** allowed at school.

## GRADE 6 GRADUATION

Grade 6 students are provided with an event to celebrate their seven years of primary schooling. Each student is presented with a graduation certificate and photo. Memorable events and photographs of primary schooling are highlighted.

## GRADE 6 SCHOLARSHIP

Each year a Grade 6 boy and a Grade 6 girl are awarded a \$125 Cowan Hamono Scholarship to assist them with post-primary education. Prudence Hamono who was the daughter of the first headmistress, Mary Cowan, set up this scholarship. Students with excellent educational records receive these awards. Awards are presented at the Grade 6 graduation celebration.

## GROUNDS

NSPS School Council employs contractors to maintain the grassed areas of the school and a local handyman to sweep paved areas and maintain our trees. It is hoped that all families will support the voluntary grounds fee charged as well as any working bees that are arranged. Volunteer help is very important as it allows us to save money to spend on educational items such as computers and books.



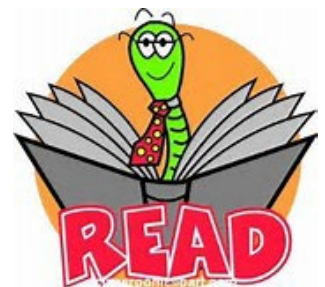
## HEAD LICE

The school endeavours to assist in head lice detection, education and prevention. Permission to check is included on the enrolment form. Parents are notified if lice or eggs are detected. If your child has live lice they will need to be treated before returning to school. Notify the school if you detect any head lice in your children so that we can undertake further grade checks as a follow up if deemed appropriate.

## HOME LEARNING

Home learning may be assigned from time to time at the discretion of the class teacher. Activities might include:

1. Make up work as a result of an absence.
2. Regular reading at home – readers supplied.
3. Regular learning and practising of times tables and number facts.
4. Regular learning of Camera Words



## HOUSE TEAMS

The school has four house teams: Red, Green, Blue and Gold. New students will be placed in the same team as older brothers and sisters attending the school. These teams are used for the Neerim Noojee Sports Association Athletic Sports and on some other occasions. An appropriate coloured T shirt and navy blue shorts are required for sports days.



## INCLUSIVE EDUCATION

Inclusive education means that all members of our school community are valued and supported to fully participate, learn, develop and succeed within an inclusive school culture.

## INFECTIOUS DISEASES

There are some infectious diseases that require students to be excluded from school. Please see the following link for a list of the conditions and exclusion period.

<https://www.health.vic.gov.au/infectious-diseases/school-exclusion-table>

Please notify the school if your child has an infectious condition.

## IMMUNISATION STATUS

All families of Foundation students on enrolment must provide the school with a copy of a current Immunisation Certificate for their child. This assists the school in managing health risks for children. Covid and influenza vaccinations are encouraged but not mandated.



## INSURANCE

Parents and guardians are responsible for paying the cost of medical treatment for injured students, including any transport costs. Most medical costs will be refundable by Medicare. If you are a member of an ambulance or health insurance fund, you may also be able to claim transport or other expenses from the fund. If an ambulance is called at anytime by the school then the cost is borne by the parents.

**Be aware that: The Department of Education and Training (DET) does not hold accident insurance for school students.**

## INTERNET

All students have access to the internet whilst at school. The internet is used for research and specific lessons. There is a policy for appropriate use of the internet which children and parents agree upon enrolment at school.

## LATE ARRIVALS

It is a DET requirement that all students who arrive after 9.00am need to be signed in at the office. Students need to report to the office and collect a late pass which is then taken to the classroom teacher.

## LEAVING SCHOOL GROUNDS

No student is permitted to leave the school grounds during school hours without a teacher's permission and a written request from parents.

## **LIBRARY**

Students have the opportunity to borrow books from our library on a regular basis on a 7 day loan. We encourage students to borrow regularly. Library bags are required at the commencement of the year by students in all grades.

## **LUNCH TREATS**

Homestyle lunches are available on Fridays from the canteen in the Orana Centre. Parent volunteers prepare the food onsite and can cater for any dietary requirements. Orders are to be made by 7pm Thursday evenings via the my school tuckshop app:

<https://myschoolconnect.com.au/dashboard>



## **LUNCH TIME**

Students are required to either bring their own lunch and recess. A period of 15 minutes at 11.00am is set aside for students to eat their lunches.

## **MEDICAL SERVICES**

Students are given eye and ear examinations by the school nurse in their Foundation year. Forms and notices of these checks will be sent home at the appropriate time by the school nurse. An office of the Health Department is situated in Warragul, where students in foundation and years 1, 2, 3 and 4 can obtain medical or dental treatment. Parents who hold Health Benefits cards are also eligible for this service. The Dental Therapy Unit phone number is 1800 242 696.

## **MEDICATION AT SCHOOL**

Occasionally when a child it may be necessary for them to have medication at school. Please ensure that a Medication Request form is completed at the office and all medication is clearly marked with name and correct dosage and in original packaging. Medication will be stored in the first aid room and administered at the office. An Asthma and Anaphylaxis's Management Plan should be supplied to the school from the family doctor and updated yearly.

## **MONEY**

If it is necessary for students to bring money to school, it should be in an envelope, sealed and labelled with the student's name, grade, amount and what it is for and the envelope handed in to the office or their classroom teacher first thing in the morning.



## **OUTSIDE SCHOOL HOURS CARE**

Commonwealth approved before and after school care operates Monday to Friday, 7.00am to 8.45am and 3.15 to 6.00pm. Most families are eligible for a government rebate. Application forms are available from the school office, or by phoning our OSHC coordinator mobile 0408 812 072. The school also provides vacation care during school holidays. Information will be available in the school newsletter, on our website and Facebook page or contact the office.

## **PARENTS AND FRIENDS ASSOCIATION**

Our Parents and Friends Association meets regularly to organise fundraising activities for the school and to enjoy social activities with other school families. They operate raffles, Mothers' and Fathers' Day stalls and other fund raising activities. They donate the profits to the school to provide much needed extra resources such as library books, computers and sporting equipment, Grade 6 graduation, etc. Everyone, including toddlers, are welcome to come along to their meetings and fundraising activities. Check our Facebook page and newsletter for dates and activities.

## **PARENT PAYMENT ARRANGEMENTS**

Please refer to parent payment policy <https://www.education.vic.gov.au/PAL/parent-payments-one-page-overview.docx>. Stationery packs are sourced from Office Choice (Select Office Supplies) in Warragul and information regarding school fees are sent home in Term 4 for the following year. Please discuss any concerns you have with the Business Manager.

## **PARENTAL ASSISTANCE**

Requests are made for assistance With Principal/teacher approval parents are welcome in classrooms to help with reading, Mathematics, Science, etc. Other areas where parents are asked to assist include working bees, gardening, parent club activities, fund raising, etc. Please feel free to discuss how you might be able to help **our** school. Volunteers are asked to supply a copy of their Working with Children Check which can be obtained online by visiting <http://www.workingwithchildren.vic.gov.au/> The check is free for volunteers. All parent volunteers must be aware of the Child Safe Standards.

## **PARENT/TEACHER DISCUSSIONS**

Discussions are held twice yearly and is 'your chance to share' with teachers. Student led conferences are a chance for your child to showcase their learning. If parents have any questions or queries, please feel free to contact us at any time to make an appointment. with the teacher, out of class hours.

## **PERSONAL INFORMATION**

Families are requested to advise the school of any changes in personal circumstances eg. Name, address and phone number of parents/guardians, email address change, family doctor, emergency contact person, any medical/physical problem your child may have etc.

## **PHOTOGRAPHS**

Early each year a designated school photographer is invited by the School Council to photograph the students and staff. Parents are notified of the date and cost via the order form and information supplied by the photography company.



## **PHONES**

If students bring personal devices to school they must abide by the DE mandated Mobile Phone Policy. Students who bring devices to school must store them in the safe at the office for the school day.

## PICKING UP STUDENTS

There is a carpark at the front of the school for parents. The service road can also be used as a pick up point. Both these minimise the need for students to cross roads at a very busy time of the day. If you need to park near the median strip, please insist that your child crosses to your car at the crossing, not over the service road.



- To avoid congestion at the front of the school some parents may arrange to meet students at the stadium carpark at the back of the school off Neerim East Road.

## PLAYGROUND SUPERVISION

There are always a minimum three staff members in the yard at recess and lunch breaks to supervise students play activities. If difficulties arise or accidents occur students are encouraged to REPORT IT to the teacher on duty. Students should not be outside defined school boundaries. There are often lunch time clubs running activities and the library is available sometimes when a staff member is available for students who want quiet activities.

## POLICIES

The school produces a policy and budget document each year. Our parents, staff and School Council work together to review and evaluate these documents. During the year you may be asked to fill out a survey form or comment on policy currently being evaluated. Copies of school policies are available from the school upon request and are available on our website.



## PRIVACY REQUIREMENTS

NSPS requires information about all parents, guardians or carers so that we can take account of family arrangements. Court Orders setting out any access restrictions and parenting plans should be made available. Please tell us as soon as possible about any changes to these arrangements.

## PUBLICATION OF STUDENT WORK

At NSPS we celebrate the efforts of our students by mentioning their participation in school events and their achievements in our school newsletter. Sometimes photographs of the students are included. Teachers often use photographs and work samples throughout the year in displays or computer presentations.



## REPORTS TO PARENTS

Reports on student progress are given to parents twice yearly. Parent/teacher discussions and student led conferences follow but parents are encouraged to keep in contact with the class teacher and other teachers at any time a need arises. Sometimes parents feel they shouldn't bother the school over certain matters. We feel it is better to have open communication between teachers and parents and therefore encourage your involvement.



## SCHOOL COUNCIL

School Council consists of the Principal and elected parent and teacher representatives. The role of School Council is to overview the complete running of the school including establishing the policies for the school, approving the budget and the spending. **The day to day operations of the school are carried out by the Principal and staff and are totally their responsibility.**



School Council meets on the third Monday each month at 6:30pm in the staffroom (or via Webex). Nominations for School Council are called for in February each year and elections are held if necessary. Half of the parent representatives and half the DET employees are up for election each year. Parents are most welcome to attend School Council meetings to see how they operate.

## SUB COMMITTEES OF SCHOOL COUNCIL

These sub-committees can involve people who are not on School Council and have a particular interest in one particular area. Sub-committees may be for the whole year or just run for the length of a particular project.

- \* Management/Finance
- \* Environment/OSHC
- \* Resources/Buildings and Grounds
- \* Curriculum/Professional Development
- \* Marketing
- \* e-learning

## SCHOOL CROSSING

Students using the school crossing must obey instructions of the crossing supervisor. Students should use the crossing at all times, particularly when crossing the car park area to go to parents cars.



## SCHOOL HISTORY

The school has seen many changes since it was officially opened on the 22nd of September 1881 with Miss Mary D. Cowan as the first Head Teacher. Two years later she married Mr. J. Hamano, an early pioneer of the Neerim District. She continued to conduct the school until 1894 when she resigned as a result of a law being passed forbidding married women teachers being employed.

The original school site was just north of the township, at Quarry Hill, near the location of the current town water storage. The building was a single portable room, with open fires for heating and our students travelled to school by walking or riding horses. In 1901 a new building was erected in the township, but this building was moved in 1908 to Jindivick and a new school was erected on our present site in 1909. This building, known today as the Cowan-Hamano, is still in operational use and you can see its original fireplaces in each of the two classrooms. We are hoping that in the future we will be successful in obtaining funds to restore the outside so that it can continue to be a historical landmark for Neerim South. An extra block of three classrooms was erected for students continuing through high school, but with the opening of Neerim South High School in 1963, the present school became completely primary. When our school commenced in the 1880's it had 22 students but as the town and district grew this number climbed to a peak of 185 students in the 1980's. Currently we have 155 students but expect this number to grow in the future as the township of Neerim South expands and with our wonderful new buildings we are confident that we can now support this expected growth.



## THE COWAN BUILDING

School Council decided to call the 1909 school building "The Cowan Hamano building" which retains the historic links with the original Head Teacher of the school *Mary Cowan*.



## THE ORANA CENTRE

This building was project managed by Davin George (parent) and Jennie Prout (Principal), erected in 2007 and opened in 2008. It is used for our OSHC programs and Vacation Care, canteen, private music lessons, chaplain's office, well-being program and other functions. We also hire it out to community groups such as yoga, dancing and book club and it is often used for voting in the State and Federal Elections.



## THE BER 3-6 LEARNING CENTRE

This building was opened in 2012 and its modern design truly reflects current trends in education theory that focuses on student centred rather than teacher centred learning, contemporary architecture and sustainability concerns. It currently houses our Library, 3-6 Grades (4 teaching spaces), 3 staff offices and is home to our fortnightly Friday assembly.



## SCHOOL TIMES

School commences at 9:00am each day. Classrooms open at 8:50am Students should not be sent to school before 8:40am. A staff member is on yard duty from 8.45am till school starts. Classes are dismissed at 3.15pm (except on the last day of each term).

**8:50am** First bell (come inside, get ready)

**11:00am** Lunch (15mins supervised eating time)

**11:15am** Bell for lunch play

**11:45am** School resumes

**1:45pm** Recess

**2:15pm** School resumes

**3:15pm** Home time

**NB** Finish time on the last day of each term is 2:30pm.

\* Foundation students stay home on Wednesdays during February and the first week of March, commencing full-time after the Labour Day Public Holiday each year.

\* Students catching buses need to line up to be marked off on the bus roll.

\* Students going to after school care will be called to go to the Orana Centre.

***Teachers are on duty from 8.45am, so we request that parents discourage students from arriving before this time. Students are expected to leave the school grounds at 3.15pm if they are walking home. Those students travelling with parents who have not been collected by 3.30pm will be directed to the office. If they are still not collected by 3.45pm as per school policy they will automatically be put into after school care and charged for participation in the program.***

## **SICK BAY**

Our first aid room is available for students who are ill at school. Occasionally students have a difficult time determining if they are genuinely ill. We generally give the parents a call. Please help us meet the needs of your child by not sending them to school ill or with undiagnosed rashes or physical problems.



## **SPARE CLOTHING**

We suggest you put some spare named underwear, long pants and socks in your child's school bag in case they have an accident. The school has a small amount of spare clothing and if your child borrows any of these clothes, please wash and return them quickly. We are also grateful for any spare school clothing you can donate.

## **SPORT**

All grades participate in a weekly sports program. When opportunities, resources and funds permit, our students participate in specialised sports clinics/days/activities. These may be at Neerim South, other schools or venues like Logan Park in Warragul. Sometimes bus costs and entrance fees are involved in addition to our activities program fees.



## **SMOKING**

Following DET guidelines the School Council have declared that Neerim South Primary School is a 'smoke free' area. Smoking is not allowed in our buildings or in our grounds.



## **STADIUM**

The stadium is shared between Neerim South Primary School and Neerim District Secondary College for use during school hours for PE lessons. Neerim Wolves Basketball Club hire the stadium for basketball competitions and trainings after school hours. This building is an overentitlement to our school and was funded many years ago through a local co-operative which raised the money needed to build the stadium. Another example of local community commitment to further develop our town.

## **STUDENT CODE OF CONDUCT**

We aim to create a safe and supportive learning environment for all our students. As a school community we have developed an expected behaviours matrix and the Classroom 5 R's. We explicitly teach expectations of students and promote a positive approach to behaviour management.

## STUDENT SERVICES

A number of services are offered to students through the school as a screening, and as a support if difficulties arise. Parents or teachers can request access to these services through the Welfare Officer or the Principal.

- ♦ **School Nurse**

The School Nursing Program provides a service to Foundation students (with parent permission) for hearing, sight and medical conditions related to school. Students from other grades can be referred for checks if medical problems are suspected. Forms go home to all Foundation students prior to the nurses' visit for parents to fill out.



- ♦ **Visiting Teacher For Students With Physical / Hearing Impairments**

This teacher is available for students who are eligible for the service.

## SWIMMING

Our swimming program is reviewed annually and depends on grants available to help subsidise the cost to families.



## TERM DATES FOR 2025

TERM 1 28 January (teachers start)

29 January – student free curriculum day

ALL Students commence Thursday 30th January to 4<sup>th</sup> April

TERM 2 22<sup>nd</sup> April to 4<sup>th</sup> July

TERM 3 21<sup>st</sup> July to 19<sup>th</sup> September

TERM 4 6<sup>th</sup> October to 19<sup>th</sup> December

**DISMISSAL on the last day of each term is 2.30pm except for Term 4 which is 1:30pm. Buses operate at this amended time.**

## TRANSITION PROGRAMS

We want to ensure our students transition with confidence from one phase of education to the next. Preschool students from local kindergartens, the 'Fly into Foundation' program that runs during term 3 and four. Our year 5 &6 students participate in range of transition days with Neerim District Secondary College. All students in the school participate in a transition day at the end of the school year to get to know staff and students in their classes for the following year.

## TOYS

No responsibility will be taken by the school for the loss or damage of any toys that students bring to school. Please do not send your child to school with special or expensive toys.

## UNIFORM

Neerim South Primary School is a uniform school. The uniform is approved by School Council. Please refer to school uniform policy included on the website for specific details. School bags, satchels, swimming bags and pencil cases are available from the office. The School Council have adopted a 'Sunsmart' policy. If the UV rating for the day is 3 or over, hats must be worn outside.

Your child is considered to be out of uniform if they are wearing items other than those listed in the uniform policy. This includes clothing that is worn UNDER the uniform but is clearly visible. If your child is out of uniform, please send a note to the classroom teacher or the office. If the child is out of uniform for several days in a week or consistently out of uniform, the school will phone the parents/guardians to reinforce the policy and offer assistance if necessary.

***N.B. Students WILL NOT be able to participate in out-of-school excursions if not in uniform.***

## SCHOOL UNIFORM SUPPLIER

Beleza Pty Ltd, Shop 1 Williams Square, Warragul, 5622 2930 keeps the full range of our uniform in stock.

The second-hand supply of uniforms is in the Orana Centre and most items are \$2 each. Contact the office for more information.

Students joining the school during the year will be given a period of grace in which to purchase uniform from the options listed.

## VIDEO RECORDING

As with DET requirement to improve teaching and learning within schools from time to time classes and teacher's lessons and professional practices will be videoed at school. These recordings are only for in school improvement use.

## VOLUNTARY PARENT CONTRIBUTIONS

See parent payment arrangements information. We do have a Building Fund. Any contributions made to this fund are tax deductible.

## WEBSITE

The school website address is [www.neerimsouthps.vic.edu.au](http://www.neerimsouthps.vic.edu.au).

## WELLBEING and ENGAGEMENT

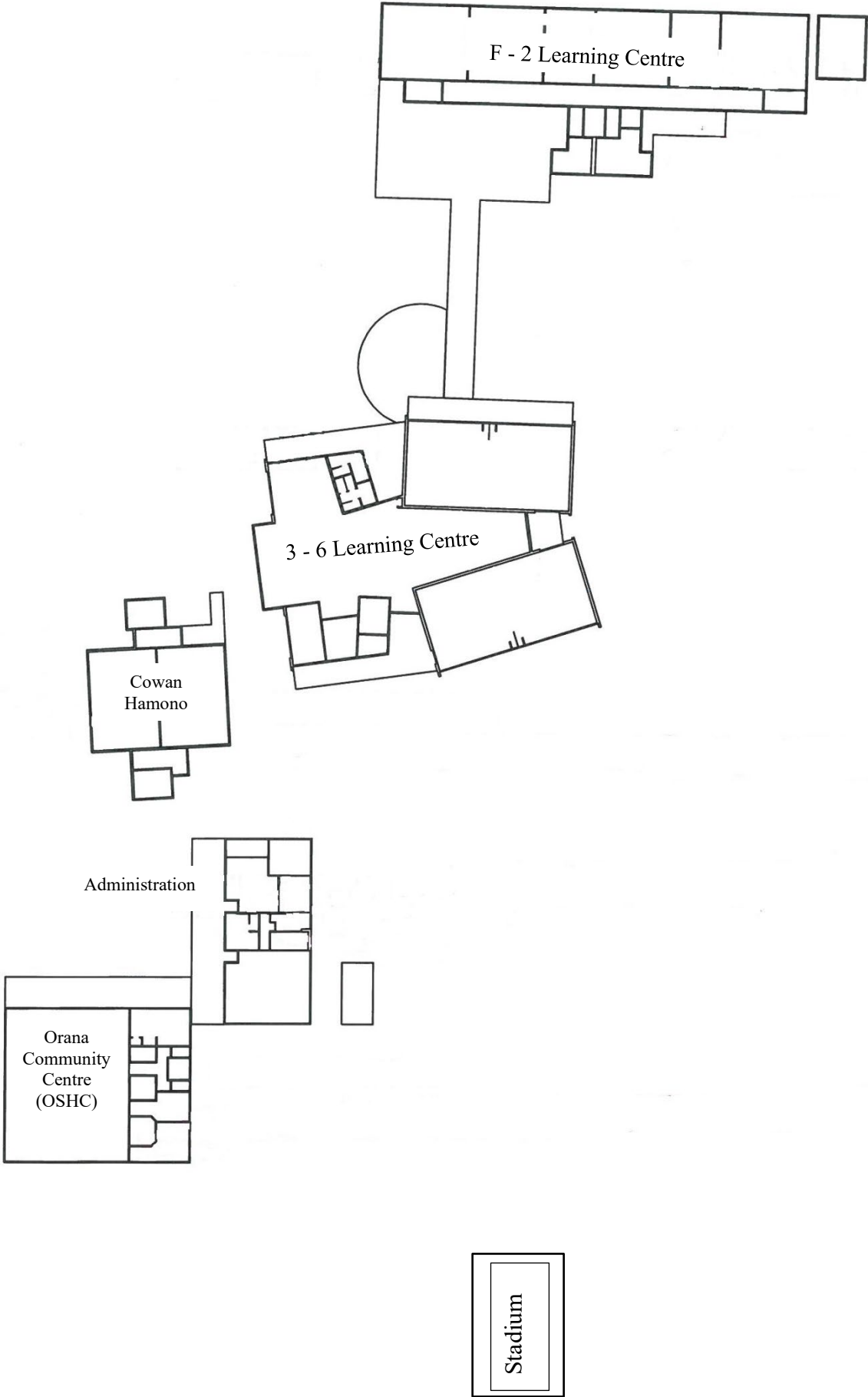
A student wellbeing and engagement policy has been developed based on the School Wide Positive Behaviour System (SWPBS) and our school values model. Whole school behaviour expectations are developed and displayed in each classroom and a set of expectations operates for the playground and other school areas.

## WET DAYS

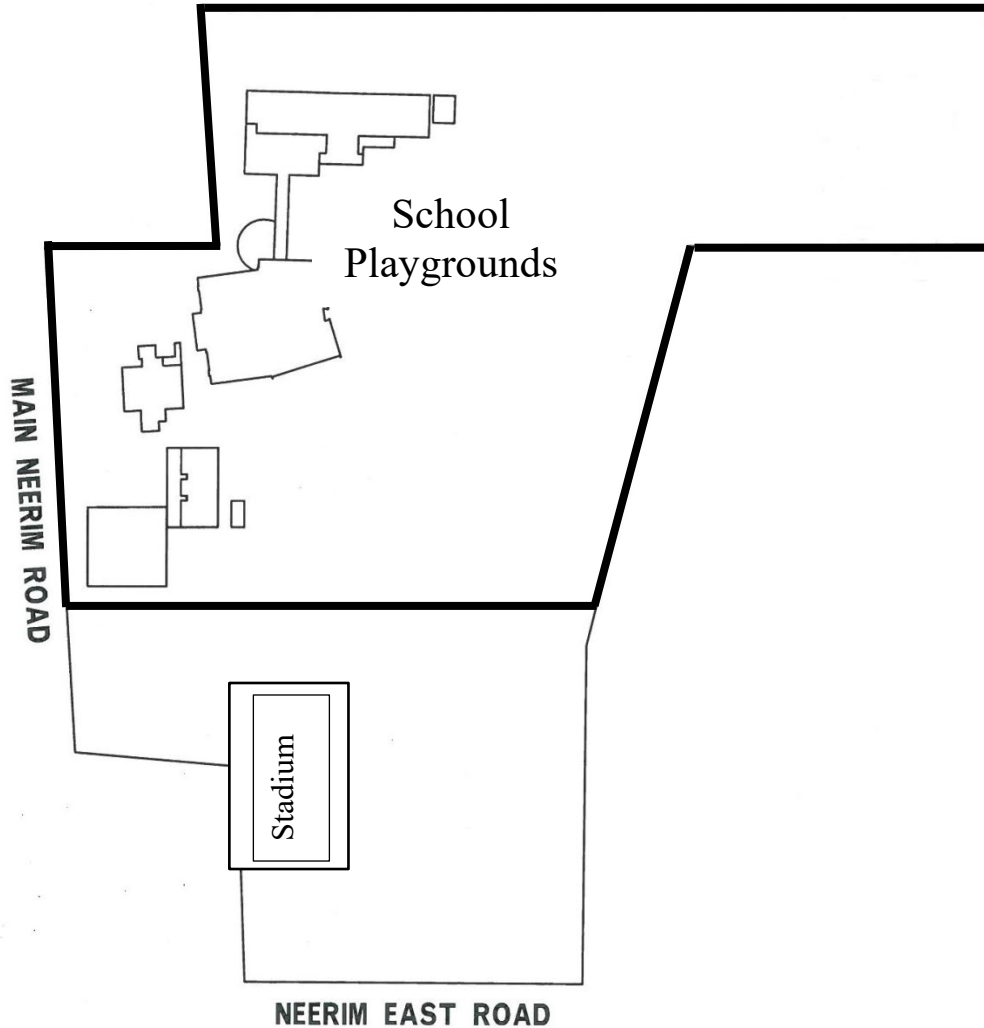
On wet days students are allowed into the library and other designated rooms at lunchtimes and recesses. They are encouraged to play quiet games, read, etc. They also have access to the extensive undercover areas available.



# BUILDINGS



## 63. GROUNDS



- \* School boundaries are shown in dark black thick lines.
- \* Tennis courts can be used for sport.
- \* Football oval is used for sport, physical education and at lunchtimes in summer.
- \* Students should NOT leave the grounds at any time without teacher supervision.

